

WEEK 1



Mon 9th Dec

Make your own musical instruments and play!

INCURSION

BOOK NOW

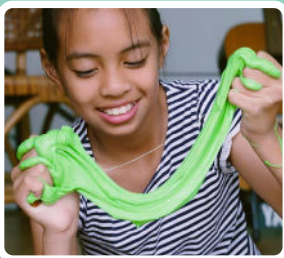


Tue 10th Dec

Join the Little Pioneers at Busselton Library.

EXCURSION

BOOK NOW



Wed 11th Dec

Slime making, cloud dough, and more sensory activities.

INCURSION

BOOK NOW



Thurs 12th Dec

Get ready to get wet! Bring a change of clothes.

INCURSION

BOOK NOW



Fri 13th Dec

Warm up your vocals for a karaoke party!

INCURSION

BOOK NOW

WEEK 2



Mon 16th Dec

K-Yr1 - Creative Heart Workshops

INCURSION

Yr2-Yr6 - Nannup Playground

EXCURSION

BOOK NOW



Tue 17th Dec

K-Yr1 - Nannup Playground

EXCURSION

Yr2-Yr6 - Olympics Christmas Activities

INCURSION

BOOK NOW



Wed 18th Dec

K-Yr1 - Maiden Reserve Park

EXCURSION

Yr2-Yr6 - Creative Heart Workshops

INCURSION

BOOK NOW



Thurs 19th Dec

K-Yr1 - Olympics Christmas Activities

INCURSION

Yr2-Yr6 - Beach Play Date

EXCURSION

BOOK NOW



Fri 20th Dec

K-Yr1 - Beach Play Date

EXCURSION

Yr2-Yr6 - Maiden Reserve Park

EXCURSION

BOOK NOW



Opening Hours: 6:30AM to 6:30PM Monday to Friday (excl public holidays).

Bus Pick-Up and Drop-Off available from 8:00AM to 5:00PM Monday to Friday (excl public holidays).

BlueBird Vacation Care Program available for children aged from 4 to 12 years old.

Alternatively existing clients may complete this form and hand in at centre

or email to office@bluebirdchildcare.com.au

or Phone **0437 751 550**

WEEK 3



Mon 23rd Dec

Celebrate Christmas with festivities at the centre.

INCURSION

BOOK NOW



Tue 24th Dec

Bring a change of clothes for a fun water play day.

INCURSION

BOOK NOW

WEEK 4



Mon 30th Dec

Groove to music in a silent disco experience!

INCURSION

BOOK NOW



Tue 31st Dec

Celebrate the New Year with fun and games.

INCURSION

BOOK NOW

Wed 1st Jan

Public Holiday

Mon 25th - 26th Dec

Public Holiday



Thurs 2nd Jan

K-Yr1 - Out of Space Activities

INCURSION

Yr2-Yr6 - Capel Playground

EXCURSION

BOOK NOW



Fri 27th Dec

Wear your comfy PJs and enjoy a chill-out movie day.

INCURSION

BOOK NOW



Fri 3rd Jan

K-Yr1 - Capel Playground

EXCURSION

Yr2-Yr6 - Out of Space Activities

INCURSION

BOOK NOW



Opening Hours: 6:30AM to 6:30PM Monday to Friday (excl public holidays).

Bus Pick-Up and Drop-Off available from 8:00AM to 5:00PM Monday to Friday (excl public holidays).

BlueBird Vacation Care Program available for children aged from 4 to 12 years old.

Alternatively existing clients may complete this form and hand in at centre

or email to office@bluebirdchildcare.com.au

or Phone **0437 751 550**

WEEK 5



Mon 6th Jan

K-Yr1 - Nannup Playground

EXCURSION

Yr2-Yr6 - Exploring Nature Activities

INCURSION

BOOK NOW



Tue 7th Jan

K-Yr1 - Exploring Nature Activities

INCURSION

Yr2-Yr6 - Nannup Playground

EXCURSION

BOOK NOW



Wed 8th Jan

K-Yr1 - Mammoth Cave

EXCURSION

Yr2-Yr6 - What is Below Us - Cave Activities

INCURSION

BOOK NOW



Thurs 9th Jan

K-Yr1 - What is Below Us - Cave Activities

INCURSION

Yr2-Yr6 - Mammoth Cave

EXCURSION

BOOK NOW



Fri 10th Jan

Watch 'Moana 2' at Orana Cinema.

EXCURSION

BOOK NOW

WEEK 6



Mon 13th Jan

K-Yr1 - Under the Sea Activities

INCURSION

Yr2-Yr6 - Rotary Park

EXCURSION

BOOK NOW



Tue 14th Jan

K-Yr1 - Rotary Park

EXCURSION

Yr2-Yr6 - Under the Sea Activities

INCURSION

BOOK NOW



Wed 15th Jan

K-Yr1 - Inventor Day Activities

INCURSION

Yr2-Yr6 - Capes Raptor Centre

EXCURSION

BOOK NOW



Thurs 16th Jan

K-Yr1 - Capes Raptor Centre

EXCURSION

Yr2-Yr6 - Master Chef Day

INCURSION

BOOK NOW



Fri 17th Jan

K-Yr1 - Simmo's

EXCURSION

Yr2-Yr6 - Inventor Day Activities

INCURSION

BOOK NOW



Opening Hours: 6:30AM to 6:30PM Monday to Friday (excl public holidays).
 Bus Pick-Up and Drop-Off available from 8:00AM to 5:00PM Monday to Friday (excl public holidays).
 BlueBird Vacation Care Program available for children aged from 4 to 12 years old.

Alternatively existing clients may complete this form and hand in at centre
 or email to office@bluebirdchildcare.com.au
 or Phone **0437 751 550**

WEEK 7



Mon 20th Jan

K-Yr1 - Penguin Day Activities

INCURSION

Yr2-Yr6 - Bunbury Wildlife Park

EXCURSION

BOOK NOW



Tue 21st Jan

K-Yr1 - Bunbury Wildlife Park

EXCURSION

Yr2-Yr6 - Penguin Day Activities

INCURSION

BOOK NOW



Wed 22nd Jan

K-Yr1 - Sensory Play Day

INCURSION

Yr2-Yr6 - Simmo's

EXCURSION

BOOK NOW



Thurs 23rd Jan

K-Yr1 - Donnybrook Playground

EXCURSION

Yr2-Yr6 - Australia Day Activities

INCURSION

BOOK NOW



Fri 24th Jan

K-Yr1 - Australia Day Activities

INCURSION

Yr2-Yr6 - Donnybrook Playground

EXCURSION

BOOK NOW

WEEK 8

Mon 27th Jan

Public Holiday



Tue 28th Jan

K-Yr1 - Make Your Own Puzzle Day

INCURSION

Yr2-Yr6 - Mangrove Cove

EXCURSION

BOOK NOW



Wed 29th Jan

K-Yr1 - Mangrove Cove

EXCURSION

Yr2-Yr6 - Make Your Own Puzzle Day

INCURSION

BOOK NOW



Thurs 30th Jan

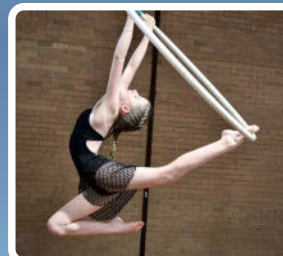
K-Yr1 - Master Chef Day

INCURSION

Yr2-Yr6 - Southwest Circus

EXCURSION

BOOK NOW



Fri 31st Jan

K-Yr1 - Southwest Circus

EXCURSION

Yr2-Yr6 - Sewing Day

INCURSION

BOOK NOW



Opening Hours: 6:30AM to 6:30PM Monday to Friday (excl public holidays).

Bus Pick-Up and Drop-Off available from 8:00AM to 5:00PM Monday to Friday (excl public holidays).

BlueBird Vacation Care Program available for children aged from 4 to 12 years old.

Alternatively existing clients may complete this form and hand in at centre

or email to office@bluebirdchildcare.com.au

or Phone **0437 751 550**

WEEK 9



Mon 3rd Feb

Watch 'Paddington in Peru' at Orana Cinema.

EXCURSION

BOOK NOW



Tue 4th Feb

Bounce and play at Gravity ETC in Dalyellup.

EXCURSION

BOOK NOW



Opening Hours: 6:30AM to 6:30PM Monday to Friday (excl public holidays).
Bus Pick-Up and Drop-Off available from 8:00AM to 5:00PM Monday to Friday (excl public holidays).
BlueBird Vacation Care Program available for children aged from 4 to 12 years old.

Alternatively existing clients may complete this form and hand in at centre
or email to office@bluebirdchildcare.com.au
or Phone **0437 751 550**

BOOKING AGREEMENT, EXCURSION AUTHORITY & BUS SERVICE

Excursions are an extension of the Blue bird Vacation Care programme and will be child orientated. We are required to notify Parents/ Guardians about any excursions including where and at what times the excursion will take place, this information is found on the Vacation care Program attached. We leave Premises between 9.30 am and 10am and return to Premises between 2-2.30pm. No staff will be present on the premises at this time. A Risk Assessment plan will have been conducted on each excursion; this will be readily available to all parents on the OWNA app to view. We follow the ratio of 1:10. We are licensed to take up to 84 children on an excursion.

Public space walking around the centre my child is enrolled in: Yes No

Incursions are an extension of the programme provided and will be child orientated. Members of our Community will regularly be a part of our program and will include (not limited to) the following:

1. Police officers: Yes No

3. Fire Fighters: Yes No

2. Dentists: Yes No

4. Aboriginal Community Members Yes No

I give permission for my children _____ to go on the following excursions marked on the program. Your child/children will be transported via our BlueBird bus service. I agree to this BlueBird Vacation Care booking for the School Holidays, including payment of the days booked. I understand if my booking is cancelled within a rostered week, I will still be charged for those bookings.

I give my child permission to travel on the Bluebird bus to and from Bluebird Childcare Centre and the excursion destination or emergency situations. My child will be in a car seat restraint suitable for their height and weight as per law.

I give permission for my child's photograph to be posted on social media: Yes No

Parent Signature: _____

Date: ____ / ____ / ____



Alternatively existing clients may complete this form and hand in at centre or email to office@bluebirdchildcare.com.au or Phone **0437 751 550**
15 Albert St Busselton WA 6280

Are You Needing Home Pick Up & Drop Off?

YES NO

HOME PICK UP & DROP OFF

If your child requires home drop off/pick up during this Vacation Care time, please fill out this section.

Child/s Name: _____

Home Pickup/Drop Address: _____

Parent Signature: _____

Date: ____ / ____ / ____